

ARTS STREAM

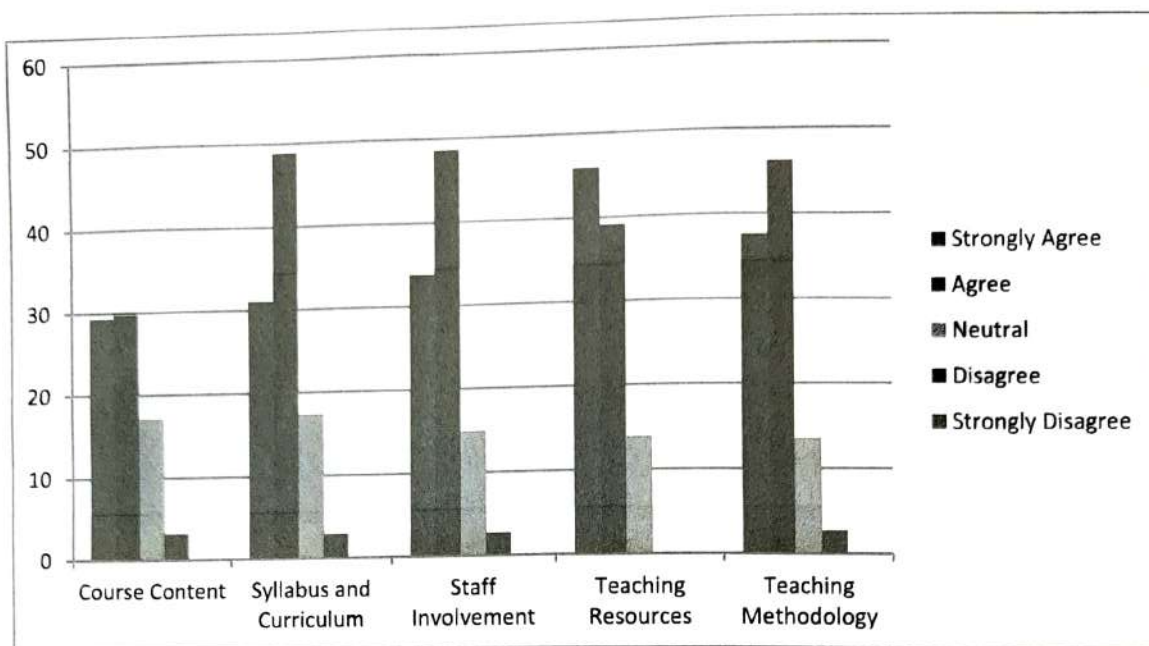
Students Feedback:

We have collected feedback from our B.A undergraduate students. In this feedback form a special five-point scale on the curriculum is developed. Students felt that the objectives were clear for each course and the course workload was also manageable by the students. The syllabus was socially relevant and suitable for the placements. Even the curriculum helps the students to be a responsible citizen of the country. The feedbacks collected from various departments are summarized as below:

Question No.	Curriculum Evaluation Points	Response in % (N = 1055)				
		Strongly Agree	Agree	Neutral	Disagree	Strongly Disagree
1	Course Content	29.3	29.7	17.1	3.2	0
2	Syllabus and Curriculum	31.0	48.8	17.3	2.9	0
3	Staff involvement	33.7	48.6	14.9	2.7	0
4	Teaching resources	45.9	39.1	13.9	0.1	0
5	Teaching Methodology	37.6	46.2	13.5	2.7	0


Principal,
Gossaigaon College, Gossaigaon


Co-ordinator
Internal Quality Assurance Cell
Gossaigaon College, Gossaigaon



Observation from the students' feedback across Arts departments:

From the above table it is found that 29.7% of students are agree with the course content, 48.8% are agree with the syllabus and curriculum, 48.6% are agree with the staff involvement, 45.9% are strongly agree with the teaching resources provided to them and 46.2% are agree with the teaching methodology.

However, 3.2% of students are disagree with the course content, 2.9% are disagree with the syllabus and curriculum, 2.7% are disagree with the staff involvement, 0.1% are disagree with the teaching resources provided to them and 2.7% are disagree with the teaching methodology.

Actions Taken:

1. The teachers were advised to focus more on active learning where the students are given an opportunity to express their talents and have some fun time and make learning more enjoyable.
2. All teachers have to cover the entire syllabus as per the course plan scheduled.
3. To improve the learning outcomes the teachers have been advised to make effective use of available ICT tools as it helps in promoting students' interest and enthusiasm in the lectures, contents, assignments and projects.
4. Teachers whose feedback is low have been asked by HODs to deliver lectures and improve on their skills with the help of senior faculty.


Principal,
Gossaigaon College, Gossaigaon


Coordinator
Internal Quality Assurance Cell
Gossaigaon College, Gossaigaon

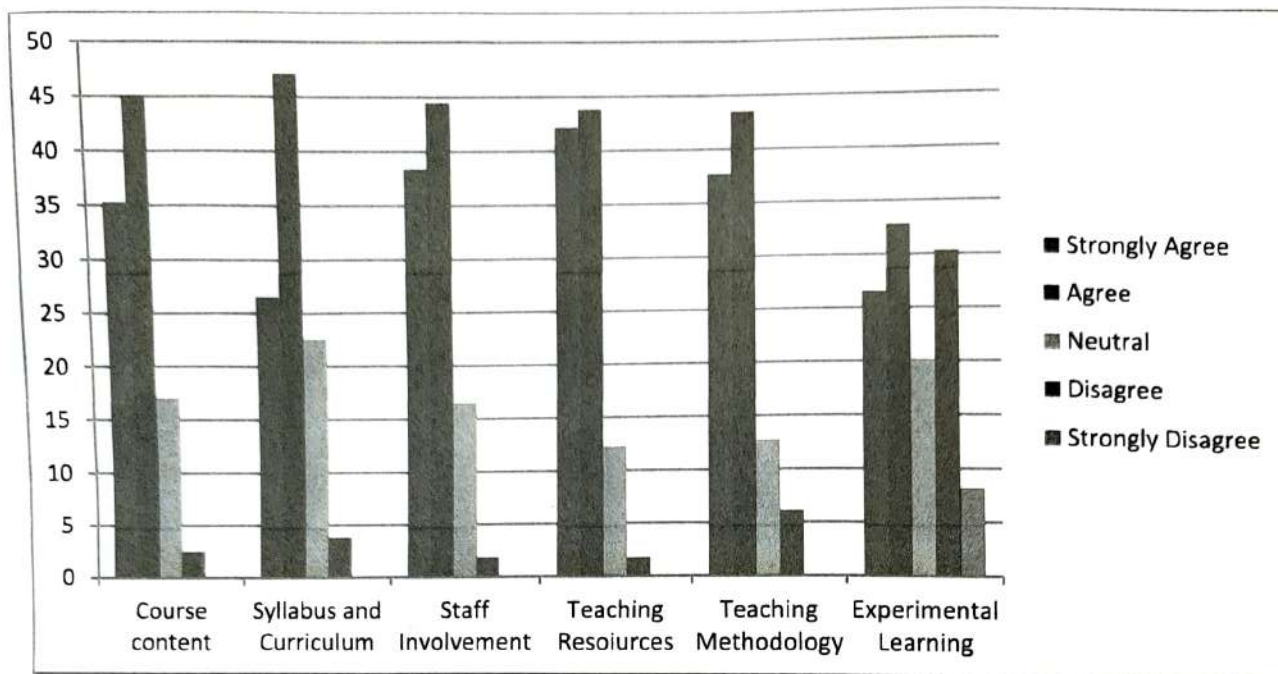
SCIENCE STREAM

We have collected feedback from our B.Sc. undergraduate students. In this feedback form a special five-point scale on the curriculum is developed. Students felt that the objectives were clear for each course and the course workload was also manageable by the students. The syllabus was socially relevant and suitable for the placements. Even the curriculum helps the students to be a responsible citizen of the country. The feedbacks collected from various departments of Science (Physics, Chemistry, Botany, Zoology, Maths, Geography) are summarized as below:

Question No.	Curriculum Evaluation Points	Response in % (N = 393)				
		Strongly Agree	Agree	Neutral	Disagree	Strongly Disagree
1	Course Content	35.3	45.0	17.1	2.5	0
2	Syllabus and Curriculum	26.5	47.1	22.5	3.8	0
3	Staff involvement	38.4	44.5	16.5	1.8	0
4	Teaching resources	42.2	43.8	12.2	1.7	0
5	Teaching Methodology	37.7	43.5	12.7	6.1	0
6	Experimental Learning	26.5	32.8	20.1	30.3	8.1


Principal,
Gossaigaon College, Gossaigaon


Co-ordinator
Internal Quality Assurance Cell
Gossaigaon College, Gossaigaon



Observation from the students' feedback across Science departments:

From the above table it is found that 45.0% of students are agree with the course content, 47.1% are agree with the syllabus and curriculum, 44.5% are agree with the staff involvement, 43.8% are agree with the teaching resources provided to them, 43.5% are agree with the teaching methodology and 32.8% are agree with the experimental learning.

However, 2.5% of students are disagree with the course content, 3.8% are disagree with the syllabus and curriculum, 1.8% are disagree with the staff involvement, 1.7% are disagree with the teaching resources provided to them, 6.1% are disagree with the teaching methodology and 30.3% are disagree with the experimental learning.

Actions Taken:

1. Design of experiments, workshops and scope for learning are to be encouraged. Towards this, the departments were advised to coordinate with IQAC to conduct these programmes.
2. Teachers should discuss the topics in detail with clear practical live examples of the contents in their subject.
3. The teachers have to use modern teaching aids like PPT, Web-resources and the teachers have to pay attention to the academically weaker students.



Principal,
Gossaigaon College, Gossaigaon

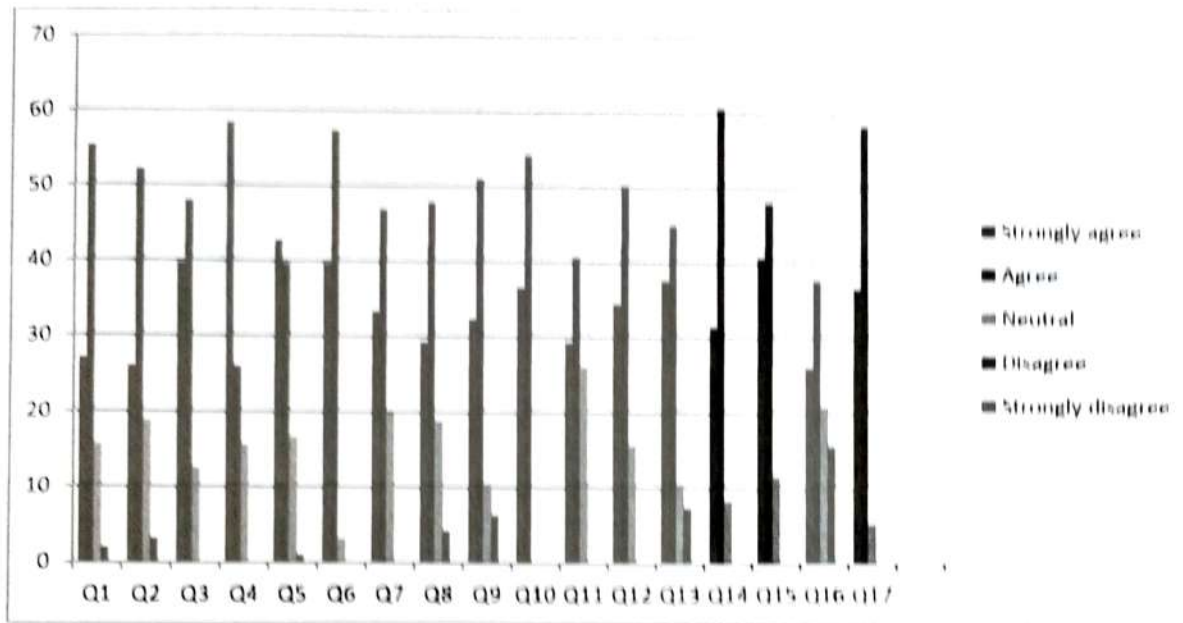

Co-ordinator
Internal Quality Assurance Cell
Gossaigaon College, Gossaigaon

Department of Economics:

Q. No	Title	Strongly Agree	Agree	Neutral	Disagree	Strongly Disagree
1.	The Course objectives are clear	27.1	55.2	15.6	2.0	0
2.	The course workload is manageable	26.0	52.1	18.7	3.1	0
3.	The course is well organized	39.6	47.9	12.5	0	0
4.	Participated actively in the course	58.3	26.0	15.6	0	0
5.	Made progress in this course	42.7	39.6	16.6	1.0	0
6.	The course is well structured for achieving the learning outcomes	39.6	57.3	3.1	0	0
7.	The learning and teaching methods encourages participation	33.3	46.9	19.8	0	0
8.	The overall environment in the department is conducive to learning	29.2	47.9	18.8	4.2	0
9.	Learning materials (lesson plans, course notes, etc.) are relevant and useful	32.3	51.0	10.4	6.3	0
10.	The provision of learning resources in the library are adequate and appropriate	36.5	54.2	9.4	0	0
11.	Recommended reading books etc. are relevant and appropriate	29.2	40.6	26.0	4.2	0
12.	Ideas and concepts are presented clearly	34.4	50.0	15.6	0	0
13.	The method of assessment is reasonable	37.5	44.8	10.4	7.3	0
14.	Feedback on assessment is timely and helpful	31.3	60.4	8.3	0	0
15.	The syllabus/curriculum has social relevance	40.6	47.9	11.5	0	0
16.	The syllabus/curriculum is suitable for placement	26.0	37.5	20.8	15.6	0
17.	The syllabus/curriculum helps in being sensitive, ethical and responsible citizen of the country	36.5	58.3	5.2	0	0


Principal,
Gossaigaon College, Gossaigaon


Co-ordinator
Internal Quality Assurance Cell
Gossaigaon College, Gossaigaon

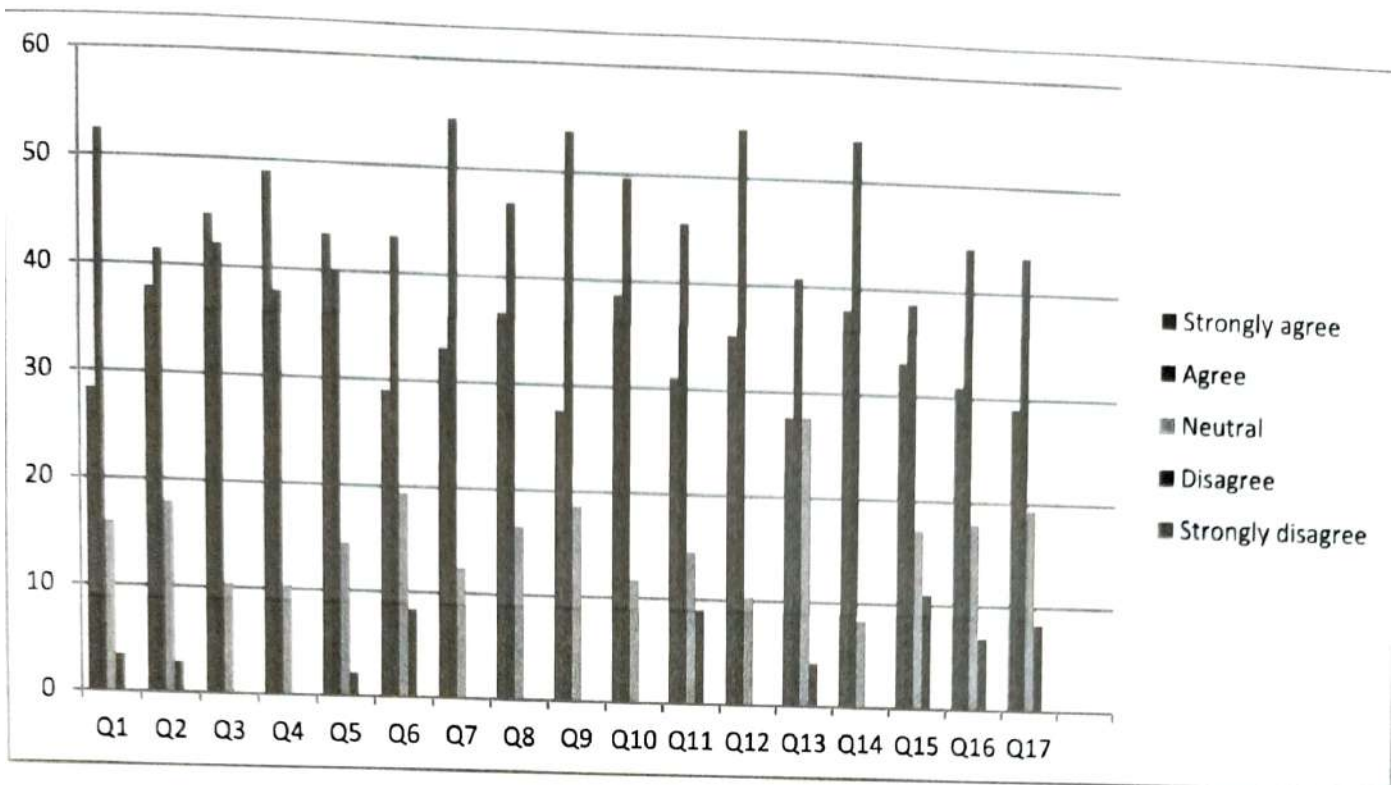



 Principal,
 Gossaigaon College, Gossaigaon

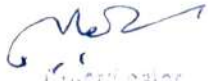

 Head of the Department,
 Department of Education,
 Gossaigaon

Department of Bodo

Q. No	Title	Strongly Agree	Agree	Neutral	Disagree	Strongly Disagree
1.	The Course objectives are clear	28.3	52.4	15.9	3.4	0
2.	The course workload is manageable	37.9	41.4	17.9	2.8	0
3.	The course is well organized	44.8	42.1	10.3	2.8	0
4.	Participated actively in the course	48.9	37.9	10.3	0	0
5.	Made progress in this course	43.4	40.0	14.5	2.1	0
6.	The course is well structured for achieving the learning outcomes	29.0	43.4	19.3	8.3	0
7.	The learning and teaching methods encourages participation	33.1	54.5	12.4	0	0
8.	The overall environment in the department is conducive to learning	36.6	46.9	16.5	0	0
9.	Learning materials (lesson plans, course notes, etc.) are relevant and useful	27.6	53.8	18.6	0	0
10.	The provision of learning resources in the library are adequate and appropriate	38.6	49.6	11.7	0	0
11.	Recommended reading books etc. are relevant and appropriate	31.0	45.5	14.5	9.0	0
12.	Ideas and concepts are presented clearly	35.2	54.5	10.3	0	0
13.	The method of assessment is reasonable	27.6	40.7	27.6	4.1	0
14.	Feedback on assessment is timely and helpful	37.9	53.8	8.3	0	0
15.	The syllabus/curriculum has social relevance	33.1	38.6	17.2	11.0	0




 Principal,
 Gossaigaon College, Gossaigaon


 Coordinator
 Internal Quality Assurance Cell
 Gossaigaon College, Gossaigaon

Department of Political Science

Q. No	Title	Strongly Agree	Agree	Neutral	Disagree	Strongly Disagree
1.	The Course objectives are clear	34.0	41.5	19.0	5.5	0
2.	The course workload is manageable	31.0	48.0	16.5	4.5	0
3.	The course is well organized	34.5	50.5	13.0	2.0	0
4.	Participated actively in the course	43.0	44.5	12.5	0	0
5.	Made progress in this course	39.0	47.0	10.0	4.0	0
6.	The course is well structured for achieving the learning outcomes	32.5	49.0	18.5	0	0
7.	The learning and teaching methods encourages participation	29.5	59.5	11.0	0	0
8.	The overall environment in the department is conducive to learning	39.0	48.0	13.0	0	0
9.	Learning materials (lesson plans, course notes, etc.) are relevant and useful	40.0	58.0	2.0	0	0
10.	The provision of learning resources in the library are adequate and appropriate	42.5	47.5	10.0	0	0
11.	Recommended reading books etc. are relevant and appropriate	38.0	46.0	10.5	5.5	0
12.	Ideas and concepts are presented clearly	31.5	44.5	24.0	0	0
13.	The method of assessment is reasonable	34.0	42.0	16.0	8.0	0
14.	Feedback on assessment is timely and helpful	31.5	36.0	20.0	12.5	0
15.	The syllabus/curriculum has social relevance	36.0	55.5	9.0	0	0
16.	The syllabus/curriculum is suitable for placement	29.5	43.0	20.0	7.5	0
17.	The syllabus/curriculum helps in being sensitive, ethical and responsible citizen of the country	35.0	47.5	17.5	0	0


 Principal
 Gossalgaoan College, Gossalgaoan


 Co-ordinator
 Internal Quality Assurance Cell
 Gossalgaoan College, Gossalgaoan

Q1 Q2 Q3 Q4 Q5 Q6 Q7 Q8 Q9 Q10 Q11 Q12 Q13 Q14 Q15 Q16 Q17



Principal
Gossaijuri College, Gossaijuri




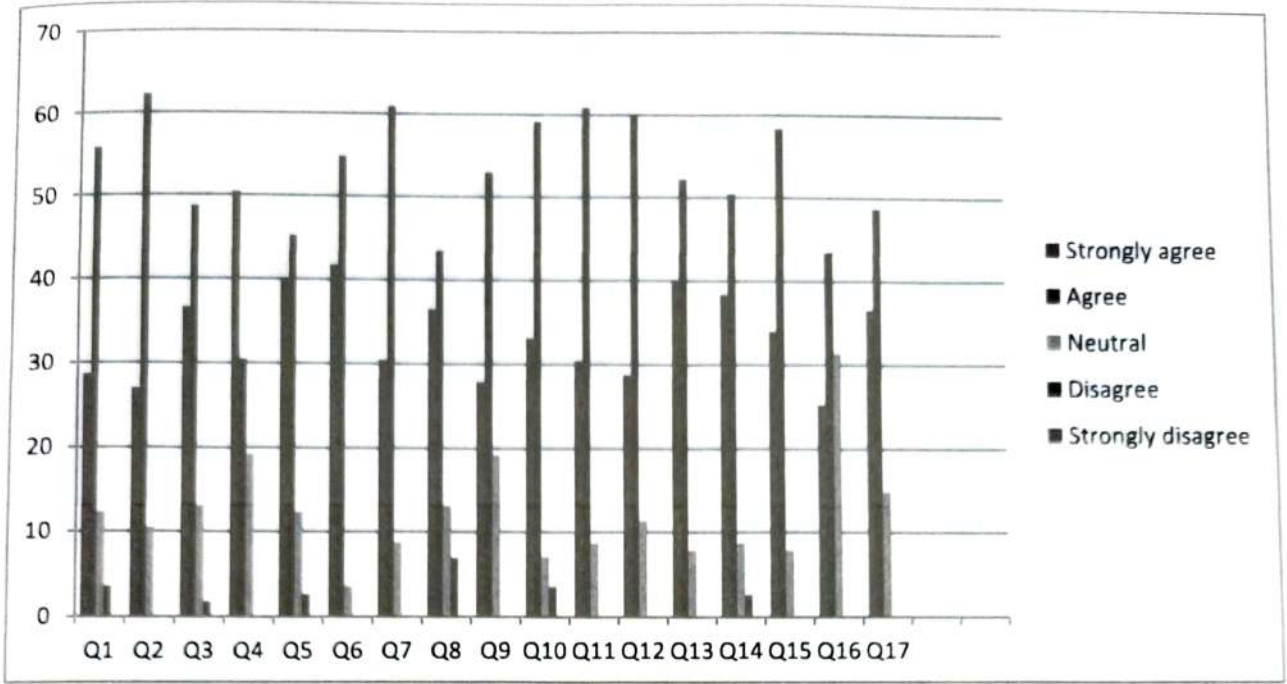
Co-ordinator
Internal Quality Assurance Cell
Gossaijuri College, Gossaijuri

Department of English

Q. No	Title	Strongly Agree	Agree	Neutral	Disagree	Strongly Disagree
1.	The Course objectives are clear	28.6	55.7	12.2	3.5	0
2.	The course workload is manageable	26.9	62.6	10.4	0	0
3.	The course is well organized	36.6	48.7	13.0	1.7	0
4.	Participated actively in the course	50.4	30.4	19.1	0	0
5.	Made progress in this course	40.0	45.2	12.2	2.6	0
6.	The course is well structured for achieving the learning outcomes	41.7	54.8	3.5	0	0
7.	The learning and teaching methods encourages participation	30.4	60.9	8.7	0	0
8.	The overall environment in the department is conducive to learning	36.5	43.5	13.0	6.9	0
9.	Learning materials (lesson plans, course notes, etc.) are relevant and useful	27.8	53.0	19.1	0	0
10.	The provision of learning resources in the library are adequate and appropriate	33.0	59.1	7.0	3.5	0
11.	Recommended reading books etc. are relevant and appropriate	30.4	60.9	8.7	0	0
12.	Ideas and concepts are presented clearly	28.7	60.0	11.3	0	0
13.	The method of assessment is reasonable	40.0	52.2	7.8	0	0
14.	Feedback on assessment is timely and helpful	38.3	50.4	8.7	2.6	0
15.	The syllabus/curriculum has social relevance	33.9	58.3	7.8	0	0
16.	The syllabus/curriculum is suitable for placement	25.2	43.5	31.3	0	0
17.	The syllabus/curriculum helps in being sensitive, ethical and responsible citizen of the country	36.5	48.7	14.8	0	0


 Principal,
 Gossaigaon College, Gossaigaon


 Co-ordinator
 Internal Quality Assurance Cell
 Gossaigaon College, Gossaigaon



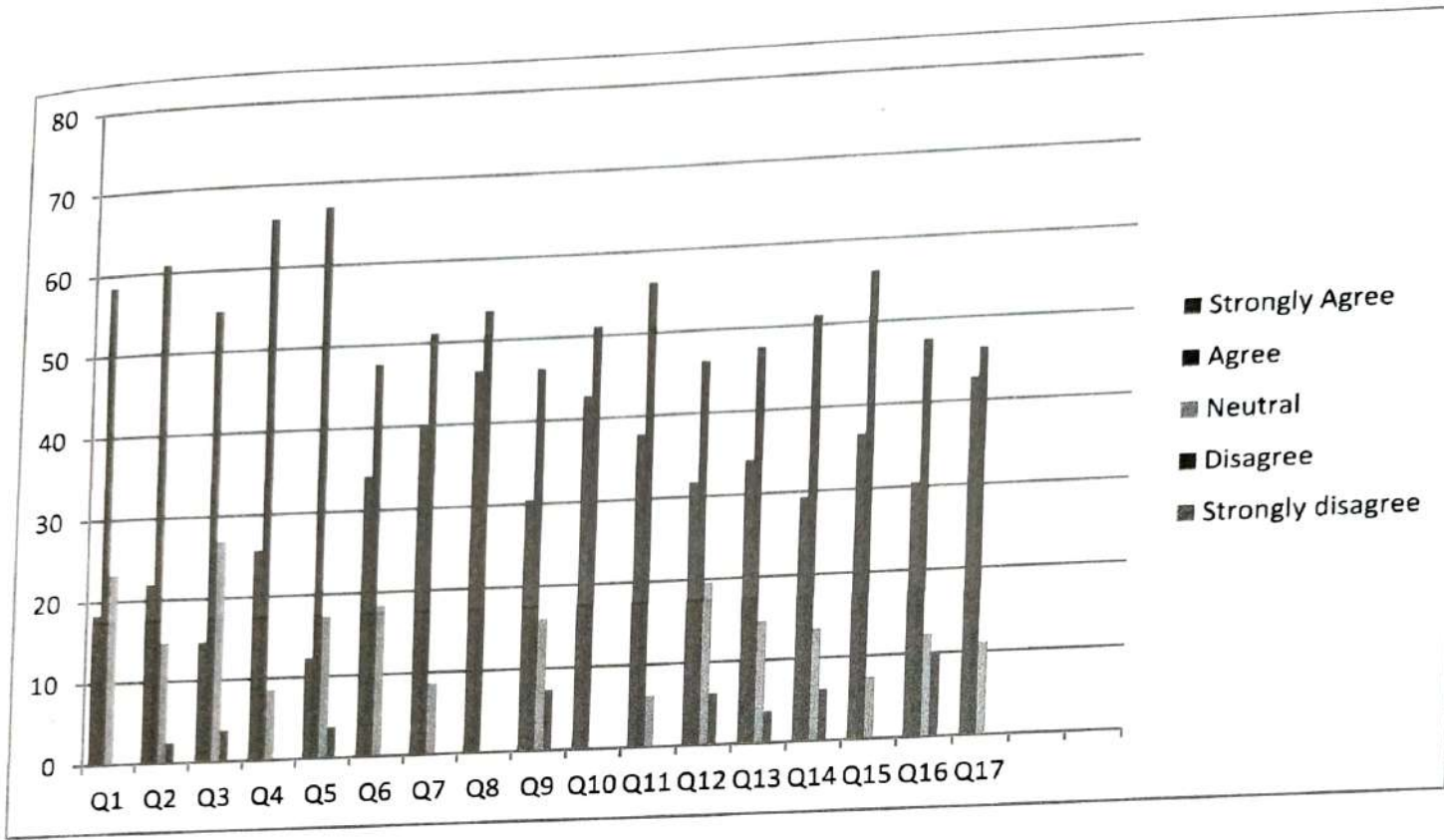

 Principal,
 Gossaiigaon College, Gossaiigaon


 Co-ordinator
 Internal Quality Assurance Cell
 Gossaiigaon College, Gossaiigaon

Q. No	Title	Strongly Agree	Agree	Neutral	Disagree	Strongly Disagree
1.	The Course objectives are clear	18.3	58.5	23.2	0	0
2.	The course workload is manageable	21.9	60.9	14.6	2.4	0
3.	The course is well organized	14.6	54.9	26.8	3.7	0
4.	Participated actively in the course	25.6	65.8	8.5	0	0
5.	Made progress in this course	12.2	67.0	17.1	3.7	0
6.	The course is well structured for achieving the learning outcomes	34.1	47.6	18.3	0	0
7.	The learning and teaching methods encourages participation	40.2	51.2	8.5	0	0
8.	The overall environment in the department is conducive to learning	46.3	53.6	0	0	0
9.	Learning materials (lesson plans, course notes, etc.) are relevant and useful	30.5	46.3	15.9	7.3	0
10.	The provision of learning resources in the library are adequate and appropriate	42.7	51.2	0	0	0
11.	Recommended reading books etc. are relevant and appropriate	37.8	56.1	6.1	0	0
12.	Ideas and concepts are presented clearly	31.7	46.3	19.5	6.1	0
13.	The method of assessment is reasonable	34.1	47.6	14.6	3.7	0
14.	Feedback on assessment is timely and helpful	29.3	51.2	13.4	6.1	0
15.	The syllabus/curriculum has social relevance	36.6	56.1	7.3	0	0
16.	The syllabus/curriculum is suitable for placement	30.5	47.6	12.2	9.8	0
17.	The syllabus/curriculum helps in being sensitive, ethical and responsible citizen of the country	42.7	46.3	11.0	0	0

Principal,
Gossaigaon College, Gossaigaon

Co-ordinator
Internal Quality Assurance Cell
Gossaigaon College, Gossaigaon




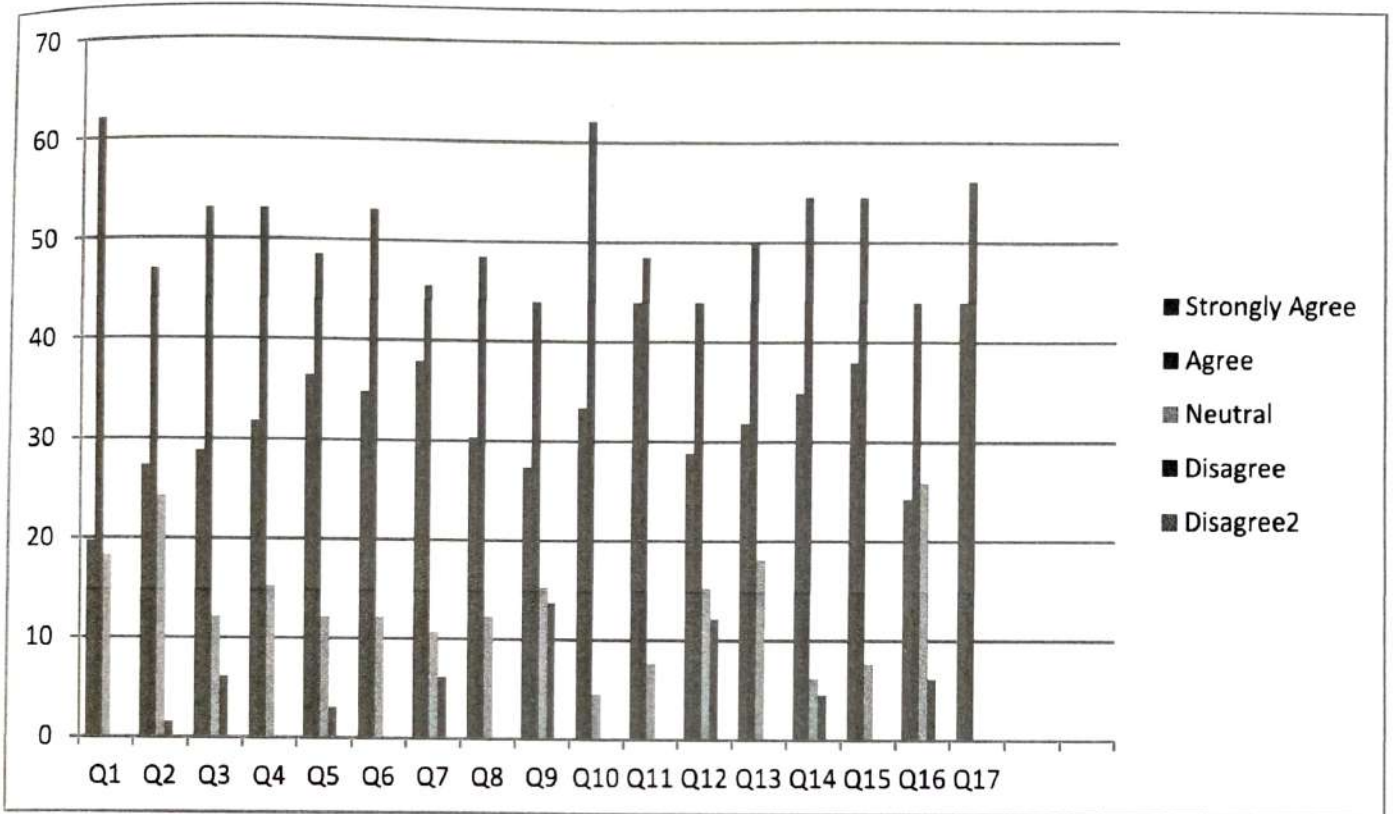
[Signature]
 Principal,
 Gossaigaon College, Gossaigaon

[Signature]
 Co-ordinator
 Internal Quality Assurance Cell


Q. No	Title	Strongly Agree	Agree	Neutral	Disagree	Strongly Disagree
1.	The Course objectives are clear	19.7	62.1	18.2	0	0
2.	The course workload is manageable	27.3	47.0	24.2	1.5	0
3.	The course is well organized	28.8	53.0	12.1	6.1	0
4.	Participated actively in the course	31.8	53.0	15.2	0	0
5.	Made progress in this course	36.4	48.5	12.1	3.0	0
6.	The course is well structured for achieving the learning outcomes	34.8	53.0	12.1	0	0
7.	The learning and teaching methods encourages participation	37.9	45.5	10.6	6.1	0
8.	The overall environment in the department is conducive to learning	30.3	48.5	21.2	0	0
9.	Learning materials (lesson plans, course notes, etc.) are relevant and useful	27.3	43.9	15.2	13.6	0
10.	The provision of learning resources in the library are adequate and appropriate	33.3	62.1	4.5	0	0
11.	Recommended reading books etc. are relevant and appropriate	43.9	48.5	7.6	0	0
12.	Ideas and concepts are presented clearly	28.8	43.9	15.2	12.1	0
13.	The method of assessment is reasonable	31.8	50.0	18.1	0	0
14.	Feedback on assessment is timely and helpful	34.8	54.5	6.1	4.5	0
15.	The syllabus/curriculum has social relevance	37.9	54.5	7.6	0	0
16.	The syllabus/curriculum is suitable for placement	24.2	43.9	25.8	6.1	0
17.	The syllabus/curriculum helps in being sensitive, ethical and responsible citizen of the country	43.9	56.1	0	0	0


 Principal,
 Gossaigaon College, Gossaigaon


 Co-ordinator
 Internal Quality Assurance Cell
 Gossaigaon College, Gossaigaon

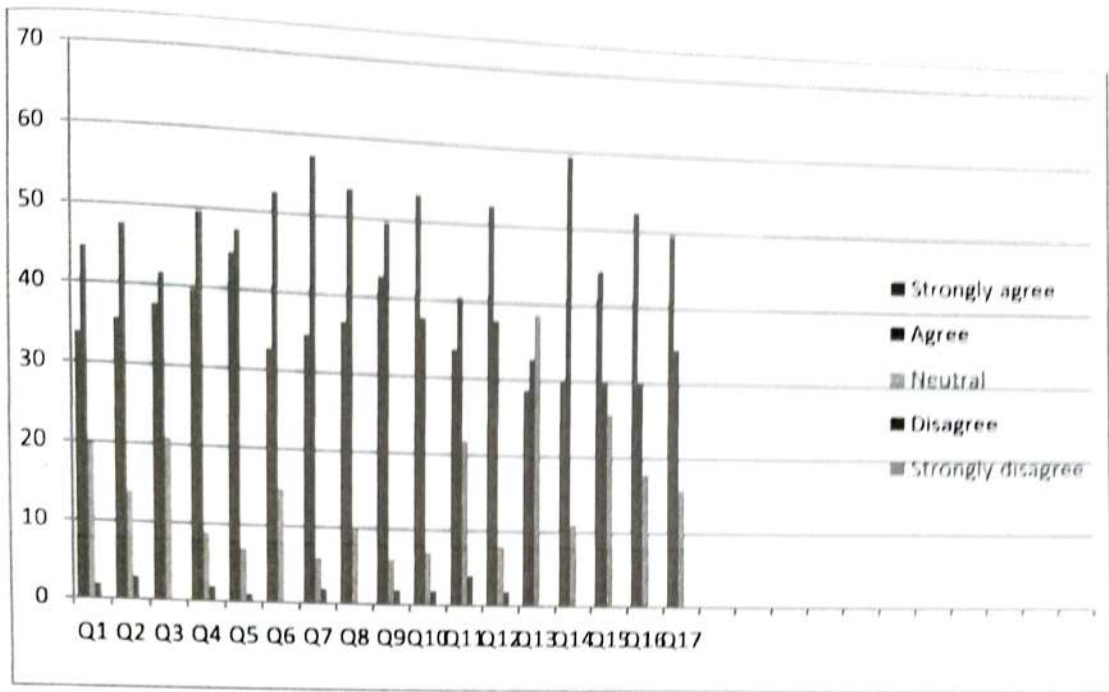



 Principal,
 Gossaigaon College, Gossaigaon


 Co-ordinator
 Internal Quality Assurance Cell
 Gossaigaon

DEPARTMENT OF GEOGRAPHY:

Q. No	Title	Strongly agree	Agree	Neutral	Disagree	Strongly disagree
1.	The course objectives were clear	33.7	44.6	19.8	1.9	0
2.	The course workload was manageable	35.6	47.5	13.9	2.9	0
3.	The course is well organized	37.6	41.6	20.8	0	0
4.	Participated actively in the college	39.6	49.5	8.9	1.9	0
5.	Made progress in this course	44.6	47.5	6.9	0.99	0
6.	The course is well structured for achieving the learning outcomes	32.7	52.5	14.8	0	0
7.	The learning and teaching methods encouraged participation	34.7	57.4	5.9	1.9	0
8.	The overall environment in the department is conducive to learning	36.6	53.5	9.9	0	0
9.	Learning materials	42.6	49.5	5.9	1.9	0
10.	The provision of learning resources in the library are adequate and appropriate	53.4	37.6	6.9	1.9	0
11.	Recommended reading books etc are relevant and appropriate	33.7	40.5	21.8	3.9	0
12.	Ideas and concepts are presented clearly	52.5	37.6	7.9	1.9	0
13.	The method of assessment are reasonable	28.7.	32.7	38.6	0	0
14.	Feedback on assessment is timely and helpful	29.7	59.4	10.9	0	0
15.	The syllabus/curriculum has social relevance	44.6	29.7	25.7	0	0
16.	The syllabus/curriculum is suitable for placement	52.5	29.7	17.8	0	0
17.	The syllabus/curriculum helps in being sensitive, ethical and responsible citizen of the country	49.5	34.6	15.8	0	0




K
 Principal,
 Gossaigaon College, Gossaigaon

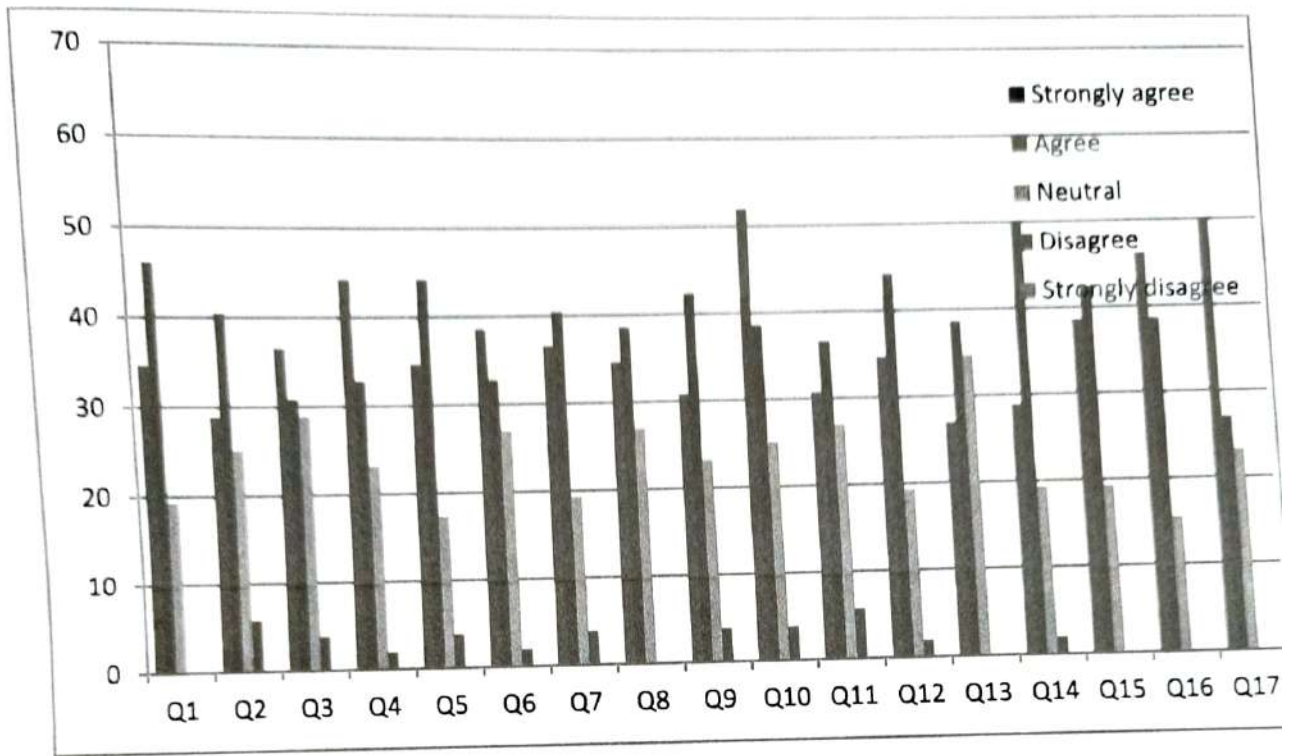
[Signature]
 Co-ordinator
 Internal Quality Assurance Cell
 Gossaigaon College, Gossaigaon

DEPARTMENT OF BOTANY:

No	Title	Strongly agree	Agree	Neutral	Disagree	Strongly disagree
1.	The course objectives were clear	34.6	46.1	19.2	0	0
2.	The course workload was manageable	28.8	40.4	25	5.8	0
3.	The course is well organized	36.5	30.8	28.8	3.8	0
4.	Participated actively in the college	44.2	32.7	23.1	1.9	0
5.	Made progress in this course	34.6	44.2	17.3	3.8	0
6.	The course is well structured for achieving the learning outcomes	38.5	32.7	26.9	1.9	0
7.	The learning and teaching methods encouraged participation	36.5	40.4	19.2	3.8	0
8.	The overall environment in the department is conducive to learning	34.6	38.5	26.9	0	0
9.	Learning materials	30.8	42.3	23.1	3.8	0
10.	The provision of learning resources in the library are adequate and appropriate	51.9	38.5	25	3.8	0
11.	Recommended reading books etc are relevant and appropriate	30.7	36.5	26.9	5.7	0
12.	Ideas and concepts are presented clearly	34.6	44.2	19.2	1.9	0
13.	The method of assessment are reasonable	26.9	38.5	34.6	0	0
14.	Feedback on assessment is timely and helpful	28.8	50	19.2	1.9	0
15.	The syllabus/curriculum has social relevance	38.5	42.3	19.2	0	0
16.	The syllabus/curriculum is suitable for placement	46.1	38.5	15.4	0	0
17.	The syllabus/curriculum helps in being sensitive, ethical and responsible citizen of the country	50	26.9	23.1	0	0


Principal,
Gossaigaon College, Gossaigaon


Co-ordinator
Internal Quality Assurance Cell
Gossaigaon College, Gossaigaon





 Principal,
 Gossaingon College, Gossaingon

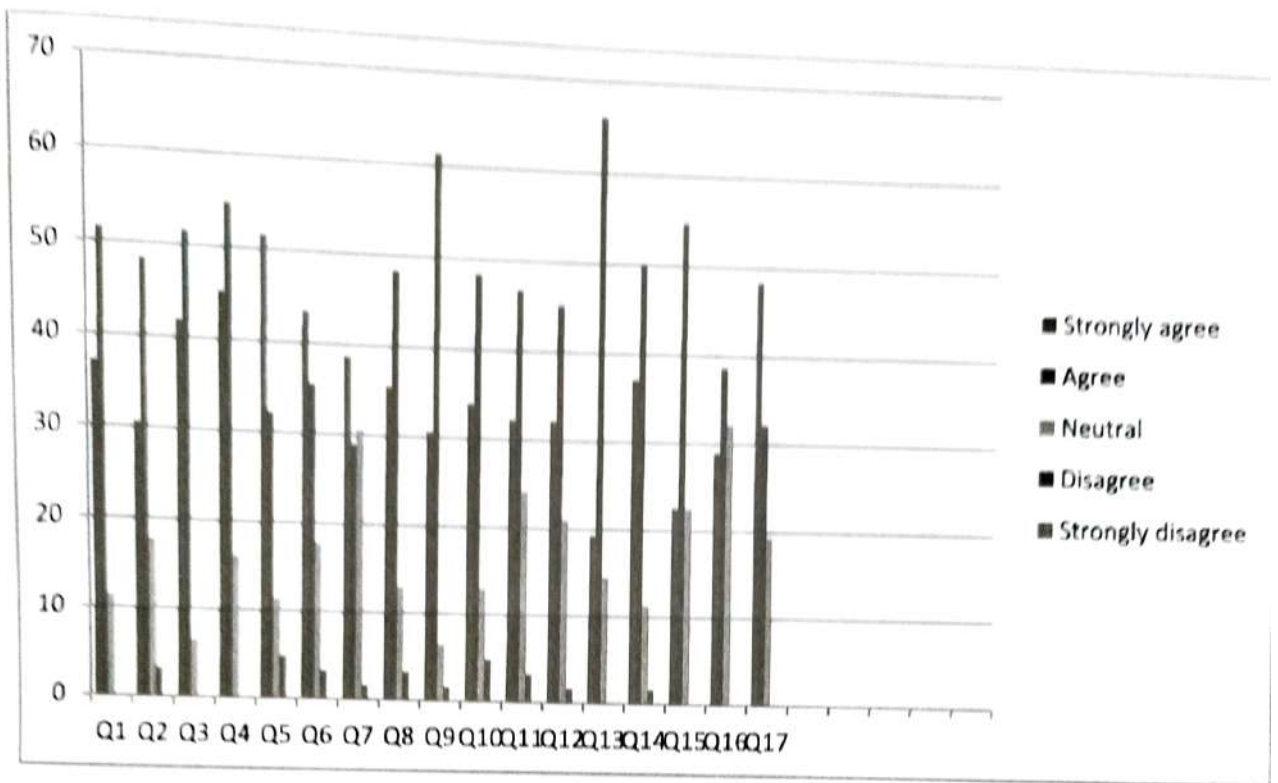

 Co-ordinator
 Internal Quality Assurance Cell
 Gossaingon College, Gossaingon

DEPARTMENT OF CHEMISTRY:

Q. No	Title	Strongly agree	Agree	Neutral	Disagree	Strongly disagree
1.	The course objectives were clear	37.1	51.6	11.3	0	0
2.	The course workload was manageable	30.6	48.4	17.7	3.2	0
3.	The course is well organized	41.9	51.6	6.4	0	0
4.	Participated actively in the college	45.2	54.8	16.1	0	0
5.	Made progress in this course	51.6	32.2	11.3	4.8	0
6.	The course is well structured for achieving the learning outcomes	43.5	35.5	17.7	3.2	0
7.	The learning and teaching methods encouraged participation	38.7	29	30.6	1.6	0
8.	The overall environment in the department is conducive to learning	35.5	48.4	12.9	3.2	0
9.	Learning materials	30.6	61.3	6.4	1.6	0
10.	The provision of learning resources in the library are adequate and appropriate	33.9	48.4	12.9	4.8	0
11.	Recommended reading books etc are relevant and appropriate	32.2	46.8	24.2	3.2	0
12.	Ideas and concepts are presented clearly	32.2	45.2	21	1.6	0
13.	The method of assessment are reasonable	19.3	66.1	14.5	0	0
14.	Feedback on assessment is timely and helpful	37.1	50	11.3	1.6	0
15.	The syllabus/curriculum has social relevance	22.6	54.8	22.6	0	0
16.	The syllabus/curriculum is suitable for placement	29	38.7	32.2	0	0
17.	The syllabus/curriculum helps in being sensitive, ethical and responsible citizen of the country	48.4	32.2	19.3	0	0


Principal,
Gossaigaon College, Gossaigaon


Co-ordinator
Internal Quality Assurance Cell
Gossaigaon College, Gossaigaon




[Signature]
 Principal,
 Gossaigaon College, Gossaigaon

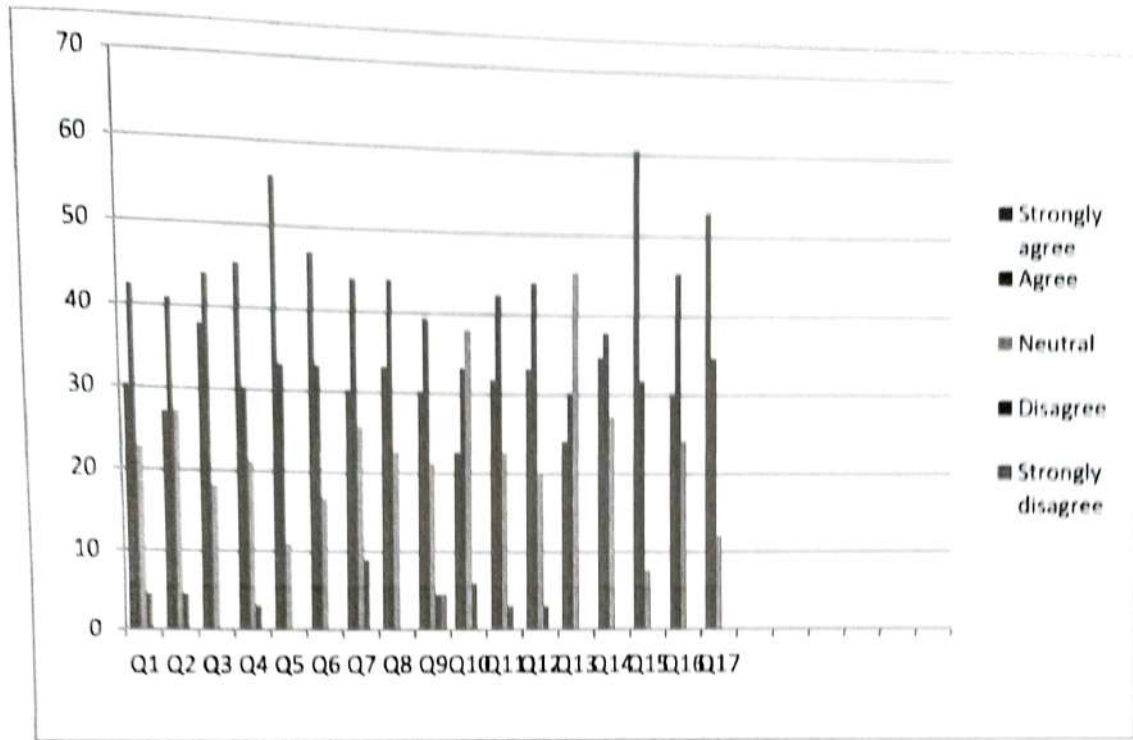
[Signature]
 Coordinator
 Internal Quality Assurance Cell
 Gossaigaon College, Gossaigaon

DEPARTMENT OF MATHS:

Q. No	Title	Strongly agree	Agree	Neutral	Disagree	Strongly disagree
1.	The course objectives were clear	30.3	42.4	22.7	4.5	0
2.	The course workload was manageable	27.2	40.9	27.3	4.5	0
3.	The course is well organized	38	44	18.1	0	0
4.	Participated actively in the college	45.4	30.3	21.2	3	0
5.	Made progress in this course	56	33.3	11	0	0
6.	The course is well structured for achieving the learning outcomes	47	33.3	16.7	0	0
7.	The learning and teaching methods encouraged participation	30.3	44	25.8	0	0
8.	The overall environment in the department is conducive to learning	33.3	44	22.7	0	0
9.	Learning materials	30.3	39.3	21.2	4.5	4.5
10.	The provision of learning resources in the library are adequate and appropriate	22.7	33.3	38	6	0
11.	Recommended reading books etc are relevant and appropriate	31.8	42.4	22.7	3	0
12.	Ideas and concepts are presented clearly	33.3	44	19.7	3	0
13.	The method of assessment are reasonable	24.2	30.3	45.4	0	0
14.	Feedback on assessment is timely and helpful	34.8	37.9	27.3	0	0
15.	The syllabus/curriculum has social relevance	60.6	31.8	7.6	0	0
16.	The syllabus/curriculum is suitable for placement	30.3	45.4	24.2	0	0
17.	The syllabus/curriculum helps in being sensitive, ethical and responsible citizen of the country	53	34.8	12.1	0	0


Principal,
Gossaigaon College, Gossaigaon


Internal Quality Assurance Cell
Gossaigaon College, Gossaigaon



[Signature]
 Principal,
 Gossaigaon College, Gossaigaon

[Signature]
 In-charge Cell
 Gossaigaon College, Gossaigaon

DEPARTMENT OF PHYSICS:


Q. No	Title	Strongly agree	Agree	Neutral	Disagree	Strongly disagree
1.	The course objectives were clear	39.5	44.7	10.5	5.3	0
2.	The course workload was manageable	31.6	47.4	15.8	5.3	0
3.	The course is well organized	57.9	31.6	10.5	0	0
4.	Participated actively in the college	21.1	63.1	13.1	2.6	0
5.	Made progress in this course	57.9	28.9	7.9	5.3	0
6.	The course is well structured for achieving the learning outcomes	44.7	47.4	7.9	0	0
7.	The learning and teaching methods encouraged participation	31.6	42.1	23.7	2.6	0
8.	The overall environment in the department is conducive to learning	34.2	47.4	18.4	0	0
9.	Learning materials	21.1	26.3	39.5	7.9	5.3
10.	The provision of learning resources in the library are adequate and appropriate	36.8	39.5	18.4	5.3	0
11.	Recommended reading books etc are relevant and appropriate	42.1	52.6	5.3	0	0
12.	Ideas and concepts are presented clearly	60.5	26.3	7.8	5.3	0
13.	The method of assessment are reasonable	26.3	39.5	34.2	0	0
14.	Feedback on assessment is timely and helpful	26.3	47.4	26.3	0	0
15.	The syllabus/curriculum has social relevance	55.3	34.2	10.5	0	0
16.	The syllabus/curriculum is suitable for placement	39.5	39.5	21.1	0	0
17.	The syllabus/curriculum helps in being sensitive, ethical and responsible citizen of the country	50	42.1	7.9	0	0


Principal,
Gossaigaon College, Gossaigaon


Coordinator
Internal Quality Assurance Cell
Gossaigaon College, Gossaigaon

Department of Assamese


Q. No	Title	Strongly Agree	Agree	Neutral	Disagree	Strongly Disagree
1.	The Course objectives are clear	32.6	44.2	21.5	1.7	0
2.	The course workload is manageable	34.8	42.5	20.4	2.2	0
3.	The course is well organized	31.5	45.3	18.8	4.4	0
4.	Participated actively in the course	45.9	38.1	15.5	0.5	0
5.	Made progress in this course	38.7	46.4	13.3	1.7	0
6.	The course is well structured for achieving the learning outcomes	32.0	33.1	30.9	3.9	0
7.	The learning and teaching methods encourages participation	36.5	34.8	24.3	4.4	0
8.	The overall environment in the department is conducive to learning	38.1	39.2	21.0	1.7	0
9.	Learning materials (lesson plans, course notes, etc.) are relevant and useful	40.3	33.1	24.3	2.2	0
10.	The provision of learning resources in the library are adequate and appropriate	34.3	41.4	21.5	2.8	0
11.	Recommended reading books etc. are relevant and appropriate	37.0	38.1	21.0	3.9	0
12.	Ideas and concepts are presented clearly	33.1	37.0	27.1	2.8	0
13.	The method of assessment is reasonable	32.6	34.8	31.5	1.1	0
14.	Feedback on assessment is timely and helpful	25.4	38.1	32.6	3.9	0
15.	The syllabus/curriculum has social relevance	38.7	35.9	25.4	0	0
16.	The syllabus/curriculum is suitable for placement	32.0	39.8	26.5	1.6	0
17.	The syllabus/curriculum helps in being sensitive, ethical and responsible citizen of the country	44.8	38.7	16.6	0	0


Principal,
Gossaigaon College, Gossaigaon


Co-ordinator
Internal Quality Assurance Cell
Gossaigaon College, Gossaigaon

DEPARTMENT OF PHYSICS:

Q. No	Title	Strongly agree	Agree	Neutral	Disagree	Strongly disagree
1.	The course objectives were clear	39.5	44.7	10.5	5.3	0
2.	The course workload was manageable	31.6	47.4	15.8	5.3	0
3.	The course is well organized	57.9	31.6	10.5	0	0
4.	Participated actively in the college	21.1	63.1	13.1	2.6	0
5.	Made progress in this course	57.9	28.9	7.9	5.3	0
6.	The course is well structured for achieving the learning outcomes	44.7	47.4	7.9	0	0
7.	The learning and teaching methods encouraged participation	31.6	42.1	23.7	2.6	0
8.	The overall environment in the department is conducive to learning	34.2	47.4	18.4	0	0
9.	Learning materials	21.1	26.3	39.5	7.9	5.3
10.	The provision of learning resources in the library are adequate and appropriate	36.8	39.5	18.4	5.3	0
11.	Recommended reading books etc are relevant and appropriate	42.1	52.6	5.3	0	0
12.	Ideas and concepts are presented clearly	60.5	26.3	7.8	5.3	0
13.	The method of assessment are reasonable	26.3	39.5	34.2	0	0
14.	Feedback on assessment is timely and helpful	26.3	47.4	26.3	0	0
15.	The syllabus/curriculum has social relevance	55.3	34.2	10.5	0	0
16.	The syllabus/curriculum is suitable for placement	39.5	39.5	21.1	0	0
17.	The syllabus/curriculum helps in being sensitive, ethical and responsible citizen of the country	50	42.1	7.9	0	0


 Principal,
 Gossainpur College, Gossainpur


 Internal Quality Assurance


Q1 Q2 Q3 Q4 Q5 Q6 Q7 Q8 Q9 Q10 Q11 Q12 Q13 Q14 Q15 Q16 Q17

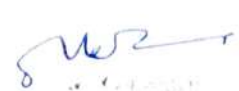

Principal,
Gossaigaon College, Gossaigaon

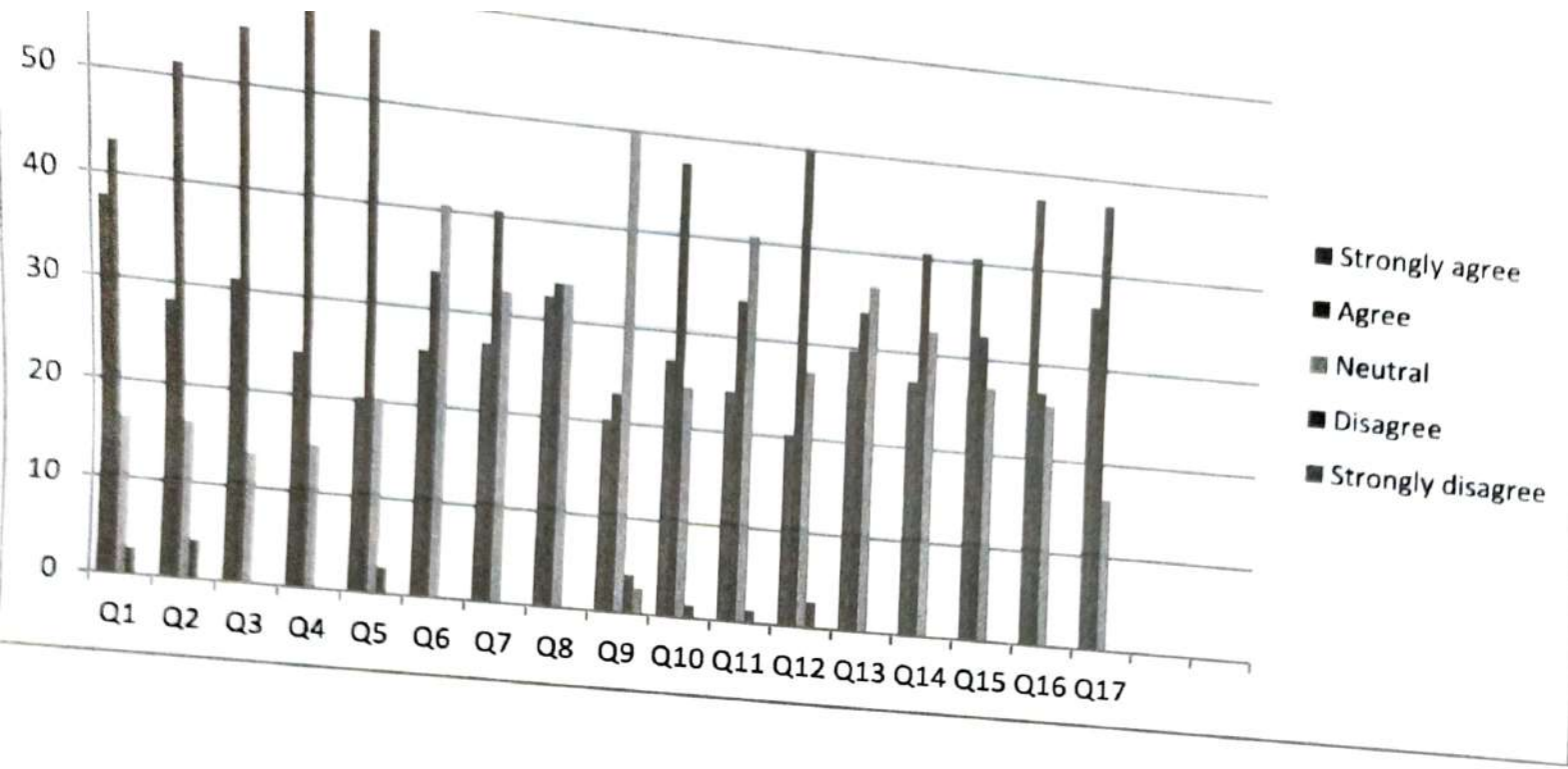

Co-ordinator
Internal Quality Assurance Cell
Gossaigaon College, Gossaigaon

DEPARTMENT OF ZOOLOGY:

Q. No	Title	Strongly agree	Agree	Neutral	Disagree	Disagree
1.	The course objectives were clear	37.8	43.2	16.2	2.7	0
2.	The course workload was manageable	28.3	51.3	16.2	4	0
3.	The course is well organized	31	55.4	13.5	0	0
4.	Participated actively in the college	24.3	60.8	14.9	0	0
5.	Made progress in this course	20.3	56.7	20.3	2.7	0
6.	The course is well structured for achieving the learning outcomes	25.7	33.8	40.5	0	0
7.	The learning and teaching methods encouraged participation	27	40.5	32.4	0	0
8.	The overall environment in the department is conducive to learning	32.4	33.8	33.8	0	0
9.	Learning materials	20.3	23	50	4	2.7
10.	The provision of learning resources in the library are adequate and appropriate	27	47.3	24.3	1.3	0
11.	Recommended reading books etc are relevant and appropriate	24.3	33.8	40.5	1.3	0
12.	Ideas and concepts are presented clearly	20.3	50	27	2.7	0
13.	The method of assessment are reasonable	29.7	33.8	36.5	0	0
14.	Feedback on assessment is timely and helpful	27	40.5	32.4	0	0
15.	The syllabus/curriculum has social relevance	40.5	32.4	27	0	0
16.	The syllabus/curriculum is suitable for placement	47.3	27	25.7	0	0
17.	The syllabus/curriculum helps in being sensitive, ethical and responsible citizen of the country	36.5	47.3	16.2	0	0


Principal,
Gossaiigaon College, Gossaiigaon


Head of Department,
Gossaiigaon College, Gossaiigaon




 Principal,
 Gossaigaon College, Gossaigaon


 Co-ordinator
 Internal Quality Assurance Cell
 Gossaigaon College, Gossaigaon

STUDENTS FEEDBACK FORM

Department: B000

Name: Chitrajit Basumatary class: 5th Sem session: _____

Q. No	Title	Strongly Agree	Agree	Neutral	Disagree	Strongly Disagree
1.	The Course objectives are clear	✓				
2.	The course workload is manageable		✓			
3.	The course is well organized		✓			
4.	Participated actively in the course			✓		
5.	Made progress in this course		✓			
6.	The course is well structured for achieving the learning outcomes	✓				
7.	The learning and teaching methods encourages participation		✓			
8.	The overall environment in the department is conducive to learning			✓		
9.	Learning materials (lesson plans, course notes, etc.) are relevant and useful		✓			
10.	The provision of learning resources in the library are adequate and appropriate	✓				
11.	Recommended reading books etc. are relevant and appropriate		✓			
12.	Ideas and concepts are presented clearly		✓			
13.	The method of assessment is reasonable			✓		
14.	Feedback on assessment is timely and helpful		✓			
15.	The syllabus/curriculum has social relevance	✓				
16.	The syllabus/curriculum is suitable for placement		✓			
17.	The syllabus/curriculum helps in being sensitive, ethical and responsible citizen of the country			✓		

Signature: Chitrajit Basumatary

STUDENTS FEEDBACK FORM

Department: English

Name: Tahajudin SK class: 5th session: _____

Q. No	Title	Strongly Agree	Agree	Neutral	Disagree	Strongly Disagree
1.	The Course objectives are clear	✓				
2.	The course workload is manageable	✓				
3.	The course is well organized		✓			
4.	Participated actively in the course			✓		
5.	Made progress in this course			✓		
6.	The course is well structured for achieving the learning outcomes	✓				
7.	The learning and teaching methods encourages participation		✓			
8.	The overall environment in the department is conducive to learning		✓			
9.	Learning materials (lesson plans, course notes, etc.) are relevant and useful			✓		
10.	The provision of learning resources in the library are adequate and appropriate	✓				
11.	Recommended reading books etc. are relevant and appropriate		✓			
12.	Ideas and concepts are presented clearly	✓				
13.	The method of assessment is reasonable		✓			
14.	Feedback on assessment is timely and helpful		✓			
15.	The syllabus/curriculum has social relevance	✓				
16.	The syllabus/curriculum is suitable for placement		✓			
17.	The syllabus/curriculum helps in being sensitive, ethical and responsible citizen of the country		✓			

Tahajudin SK
Signature

STUDENTS FEEDBACK FORM

Department: Education

Name: Jenaki Paul class: 5th Sem session: _____

Q. No	Title	Strongly Agree	Agree	Neutral	Disagree	Strongly Disagree
1.	The Course objectives are clear		✓			
2.	The course workload is manageable		✓			
3.	The course is well organized	✓				
4.	Participated actively in the course		✓			
5.	Made progress in this course		✓			
6.	The course is well structured for achieving the learning outcomes	✓				
7.	The learning and teaching methods encourages participation		✓			
8.	The overall environment in the department is conducive to learning			✓		
9.	Learning materials (lesson plans, course notes, etc.) are relevant and useful		✓			
10.	The provision of learning resources in the library are adequate and appropriate		✓			
11.	Recommended reading books etc. are relevant and appropriate			✓		
12.	Ideas and concepts are presented clearly		✓			
13.	The method of assessment is reasonable	✓				
14.	Feedback on assessment is timely and helpful		✓			
15.	The syllabus/curriculum has social relevance			✓		
16.	The syllabus/curriculum is suitable for placement		✓			
17.	The syllabus/curriculum helps in being sensitive, ethical and responsible citizen of the country		✓			

Signature Jenaki Paul

STUDENTS FEEDBACK FORM

Department: Mathematics

Name: Bhajana Saha class: 3rd Sem session: _____

Q. No	Title	Strongly Agree	Agree	Neutral	Disagree	Strongly Disagree
1.	The Course objectives are clear		✓			
2.	The course workload is manageable		✓			
3.	The course is well organized	✓				
4.	Participated actively in the course		✓			
5.	Made progress in this course			✓		
6.	The course is well structured for achieving the learning outcomes		✓			
7.	The learning and teaching methods encourages participation	✓				
8.	The overall environment in the department is conducive to learning		✓			
9.	Learning materials (lesson plans, course notes, etc.) are relevant and useful			✓		
10.	The provision of learning resources in the library are adequate and appropriate		✓			
11.	Recommended reading books etc. are relevant and appropriate		✓			
12.	Ideas and concepts are presented clearly		✓			
13.	The method of assessment is reasonable	✓				
14.	Feedback on assessment is timely and helpful		✓	✓		
15.	The syllabus/curriculum has social relevance			✓		
16.	The syllabus/curriculum is suitable for placement			✓		
17.	The syllabus/curriculum helps in being sensitive, ethical and responsible citizen of the country		✓			

Signature Bhajana Saha

STUDENTS FEEDBACK FORM

Department: Chemistry

Name: Mubarak Pradhani class: 5th Sem session: _____

Q. No	Title	Strongly Agree	Agree	Neutral	Disagree	Strongly Disagree
1.	The Course objectives are clear		✓			
2.	The course workload is manageable			✓		
3.	The course is well organized			✓		
4.	Participated actively in the course		✓			
5.	Made progress in this course		✓			
6.	The course is well structured for achieving the learning outcomes		✓			
7.	The learning and teaching methods encourages participation		✓			
8.	The overall environment in the department is conducive to learning			✓		
9.	Learning materials (lesson plans, course notes, etc.) are relevant and useful		✓			
10.	The provision of learning resources in the library are adequate and appropriate		✓			
11.	Recommended reading books etc. are relevant and appropriate		✓			
12.	Ideas and concepts are presented clearly		✓			
13.	The method of assessment is reasonable		✓			
14.	Feedback on assessment is timely and helpful		✓			
15.	The syllabus/curriculum has social relevance		✓			
16.	The syllabus/curriculum is suitable for placement		✓			
17.	The syllabus/curriculum helps in being sensitive, ethical and responsible citizen of the country		✓			

Signature Mubarak Pradhani

STUDENTS FEEDBACK FORM

Department: Assamese

Name: Aspita Sharker class: _____ session: _____

Q. No	Title	Strongly Agree	Agree	Neutral	Disagree	Strongly Disagree
1.	The Course objectives are clear	✓				
2.	The course workload is manageable		✓			
3.	The course is well organized		✓			
4.	Participated actively in the course		✓			
5.	Made progress in this course			✓		
6.	The course is well structured for achieving the learning outcomes			✓		
7.	The learning and teaching methods encourages participation		✓			
8.	The overall environment in the department is conducive to learning	✓				
9.	Learning materials (lesson plans, course notes, etc.) are relevant and useful		✓			
10.	The provision of learning resources in the library are adequate and appropriate		✓			
11.	Recommended reading books etc. are relevant and appropriate	✓				
12.	Ideas and concepts are presented clearly		✓			
13.	The method of assessment is reasonable		✓			
14.	Feedback on assessment is timely and helpful	✓				
15.	The syllabus/curriculum has social relevance		✓			
16.	The syllabus/curriculum is suitable for placement			✓		
17.	The syllabus/curriculum helps in being sensitive, ethical and responsible citizen of the country		✓			

Signature Aspita Sharker

STUDENTS FEEDBACK FORM

Department: Political Science

Name: Sultana Yasmin class: 3rd sem session: _____

Q. No	Title	Strongly Agree	Agree	Neutral	Disagree	Strongly Disagree
1.	The Course objectives are clear		✓			
2.	The course workload is manageable	✓				
3.	The course is well organized		✓			
4.	Participated actively in the course			✓		
5.	Made progress in this course		✓			
6.	The course is well structured for achieving the learning outcomes	✓				
7.	The learning and teaching methods encourages participation		✓			
8.	The overall environment in the department is conducive to learning		✓			
9.	Learning materials (lesson plans, course notes, etc.) are relevant and useful		✓			
10.	The provision of learning resources in the library are adequate and appropriate			✓		
11.	Recommended reading books etc. are relevant and appropriate		✓			
12.	Ideas and concepts are presented clearly	✓				
13.	The method of assessment is reasonable		✓			
14.	Feedback on assessment is timely and helpful			✓		
15.	The syllabus/curriculum has social relevance		✓			
16.	The syllabus/curriculum is suitable for placement		✓			
17.	The syllabus/curriculum helps in being sensitive, ethical and responsible citizen of the country	✓				

Signature Sultana Yasmin

STUDENTS FEEDBACK FORM

Department: Botany

Name: Purnima Roy class: 5th session: _____

Q. No	Title	Strongly Agree	Agree	Neutral	Disagree	Strongly Disagree
1.	The Course objectives are clear	✓				
2.	The course workload is manageable	✓				
3.	The course is well organized		✓			
4.	Participated actively in the course		✓			
5.	Made progress in this course	✓				
6.	The course is well structured for achieving the learning outcomes			✓		
7.	The learning and teaching methods encourages participation		✓			
8.	The overall environment in the department is conducive to learning			✓		
9.	Learning materials (lesson plans, course notes, etc.) are relevant and useful		✓			
10.	The provision of learning resources in the library are adequate and appropriate		✓			
11.	Recommended reading books etc. are relevant and appropriate		✓			
12.	Ideas and concepts are presented clearly			✓		
13.	The method of assessment is reasonable		✓			
14.	Feedback on assessment is timely and helpful		✓			
15.	The syllabus/curriculum has social relevance			✓		
16.	The syllabus/curriculum is suitable for placement		✓			
17.	The syllabus/curriculum helps in being sensitive, ethical and responsible citizen of the country	✓				

Purnima Roy
Signature

STUDENTS FEEDBACK FORM

Department: Philosophy

Name: Nishita Rabha

class: 1st Sem

session: _____

Q. No	Title	Strongly Agree	Agree	Neutral	Disagree	Strongly Disagree
1.	The Course objectives are clear		✓			
2.	The course workload is manageable	✓				
3.	The course is well organized		✓			
4.	Participated actively in the course			✓		
5.	Made progress in this course		✓			
6.	The course is well structured for achieving the learning outcomes	✓				
7.	The learning and teaching methods encourages participation		✓			
8.	The overall environment in the department is conducive to learning		✓			
9.	Learning materials (lesson plans, course notes, etc.) are relevant and useful	✓				
10.	The provision of learning resources in the library are adequate and appropriate		✓			
11.	Recommended reading books etc. are relevant and appropriate			✓		
12.	Ideas and concepts are presented clearly		✓			
13.	The method of assessment is reasonable	✓				
14.	Feedback on assessment is timely and helpful		✓			
15.	The syllabus/curriculum has social relevance		✓			
16.	The syllabus/curriculum is suitable for placement			✓		
17.	The syllabus/curriculum helps in being sensitive, ethical and responsible citizen of the country	✓				

Nishita Rabha.
Signature

STUDENTS FEEDBACK FORM

Department: Physics

Name: Munthai Basumadany class: _____ session: _____

Q. No	Title	Strongly Agree	Agree	Neutral	Disagree	Strongly Disagree
1.	The Course objectives are clear	✓				
2.	The course workload is manageable		✓			
3.	The course is well organized		✓			
4.	Participated actively in the course			✓		
5.	Made progress in this course		✓			
6.	The course is well structured for achieving the learning outcomes		✓			
7.	The learning and teaching methods encourages participation	✓				
8.	The overall environment in the department is conducive to learning		✓			
9.	Learning materials (lesson plans, course notes, etc) are relevant and useful			✓		
10.	The provision of learning resources in the library are adequate and appropriate	✓				
11.	Recommended reading books etc. are relevant and appropriate		✓			
12.	Ideas and concepts are presented clearly		✓			
13.	The method of assessment is reasonable			✓		
14.	Feedback on assessment is timely and helpful					
15.	The syllabus/curriculum has social relevance	✓				
16.	The syllabus/curriculum is suitable for placement		✓			
17.	The syllabus/curriculum helps in being sensitive, ethical and responsible citizen of the country		✓			


 Signature

STUDENTS FEEDBACK FORM

Department: History

Name: Karnalins Talang class: 1st Sem session: _____

Q. No	Title	Strongly Agree	Agree	Neutral	Disagree	Strongly Disagree
1.	The Course objectives are clear	✓				
2.	The course workload is manageable	✓				
3.	The course is well organized		✓			
4.	Participated actively in the course		✓			
5.	Made progress in this course		✓			
6.	The course is well structured for achieving the learning outcomes		✓			
7.	The learning and teaching methods encourages participation	✓	✗			
8.	The overall environment in the department is conducive to learning		✓			
9.	Learning materials (lesson plans, course notes, etc.) are relevant and useful		✓			
10.	The provision of learning resources in the library are adequate and appropriate			✓		
11.	Recommended reading books etc. are relevant and appropriate		✓			
12.	Ideas and concepts are presented clearly			✓		
13.	The method of assessment is reasonable	✓				
14.	Feedback on assessment is timely and helpful	✓				
15.	The syllabus/curriculum has social relevance		✓			
16.	The syllabus/curriculum is suitable for placement		✓			
17.	The syllabus/curriculum helps in being sensitive, ethical and responsible citizen of the country		✓			

Signature Karnalins

STUDENTS FEEDBACK FORM

Department: Zoology

Name: Anuska Daimary class: 3rd Sem session: _____

Q. No	Title	Strongly Agree	Agree	Neutral	Disagree	Strongly Disagree
1.	The Course objectives are clear	✓				
2.	The course workload is manageable		✓			
3.	The course is well organized	✓				
4.	Participated actively in the course		✓			
5.	Made progress in this course			✓		
6.	The course is well structured for achieving the learning outcomes		✓			
7.	The learning and teaching methods encourages participation	✓				
8.	The overall environment in the department is conducive to learning	✓				
9.	Learning materials (lesson plans, course notes, etc.) are relevant and useful		✓			
10.	The provision of learning resources in the library are adequate and appropriate			✓		
11.	Recommended reading books etc. are relevant and appropriate			✓		
12.	Ideas and concepts are presented clearly		✓			
13.	The method of assessment is reasonable		✓			
14.	Feedback on assessment is timely and helpful	✓				
15.	The syllabus/curriculum has social relevance		✓			
16.	The syllabus/curriculum is suitable for placement			✓		
17.	The syllabus/curriculum helps in being sensitive, ethical and responsible citizen of the country		✓			

Signature Anuska Daimary

STUDENTS FEEDBACK FORM

Department: Geography

Name: Abhishek Ray class: 5th Sem section: _____

Q. No	Title	Strongly Agree	Agree	Neutral	Disagree	Strongly Disagree
1.	The Course objectives are clear	✓				
2.	The course workload is manageable		✓			
3.	The course is well organized	✓				
4.	Participated actively in the course		✓			
5.	Made progress in this course			✓		
6.	The course is well structured for achieving the learning outcomes	✓				
7.	The learning and teaching methods encourages participation		✓			
8.	The overall environment in the department is conducive to learning	✓				
9.	Learning materials (lesson plans, course notes, etc.) are relevant and useful			✓		
10.	The provision of learning resources in the library are adequate and appropriate		✓			
11.	Recommended reading books etc. are relevant and appropriate	✓				
12.	Idea and concepts are presented clearly	✓				
13.	The method of assessment is reasonable		✓			
14.	Feedback on assessment is timely and helpful			✓		
15.	The syllabus/curriculum has social relevance		✓			
16.	The syllabus/curriculum is suitable for placement	✓				
17.	The syllabus/curriculum helps in being sensitive, ethical and responsible citizen of the country		✓			

Signature Abhishek Ray

STUDENTS FEEDBACK FORM

Department: Economics

Name: Aluc Alom Sk class: 5th section: _____

Q. No	Title	Strongly Agree	Agree	Neutral	Disagree	Strongly Disagree
1.	The Course objectives are clear		✓			
2.	The course workload is manageable		✓			
3.	The course is well organized	✓				
4.	Participated actively in the course	✓				
5.	Made progress in this course		✓			
6.	The course is well structured for achieving the learning outcomes	✓				
7.	The learning and teaching methods encourages participation	✓				
8.	The overall environment in the department is conducive to learning	✓				
9.	Learning materials (lesson plans, course notes, etc.) are relevant and useful	✓				
10.	The provision of learning resources in the library are adequate and appropriate	✓				
11.	Recommended reading books etc. are relevant and appropriate	✓				
12.	Ideas and concepts are presented clearly	✓				
13.	The method of assessment is reasonable		✓			
14.	Feedback on assessment is timely and helpful		✓			
15.	The syllabus/curriculum has social relevance		✓			
16.	The syllabus/curriculum is suitable for placement		✓			
17.	The syllabus/curriculum helps in being sensitive, ethical and responsible citizen of the country	✓				

Signature Aluc Alom Sk